

PRODUCTS

BusinessObjects Voyager

Complete Analysis of Business Issues

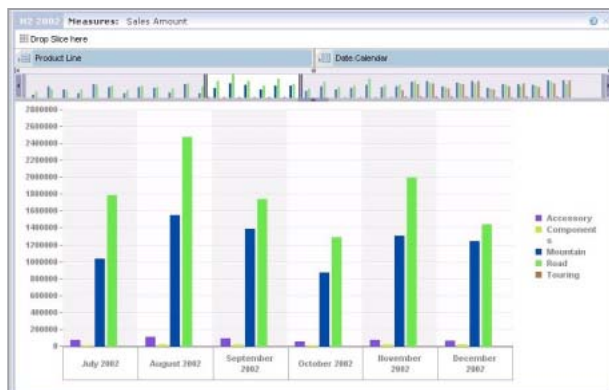
With BusinessObjects™ Voyager, your financial analysts can explore OLAP data using a tool designed specifically for them – one that delivers a full range of functions for the analysis of multi-dimensional data sets. Users will be able to quickly answer business questions and then share their analysis and workspace with others, spreading knowledge beyond the confines of a single department or analysis group. BusinessObjects Voyager delivers:

- Powerful analysis and sharing of OLAP data
- Comprehensive data access
- Cost effective deployment options

Analysis and Sharing of OLAP data

Today, most analyst tools are a compromise between a report authoring environment and an analysis tool. But Voyager is specifically designed for analysts so you can be sure it meets their exact requirements.

With Voyager, users can get answers to business questions while viewing multi-dimensional data sets – large or small – quickly and efficiently. Examples include the “chart slider,” a function that allows users to magnify a specific subset of a data set. As an example, users can focus on the period between Q1 2006 and Q1 2007, while still viewing the overall data trend. They can easily obtain answers without needing multiple, complex views of data.



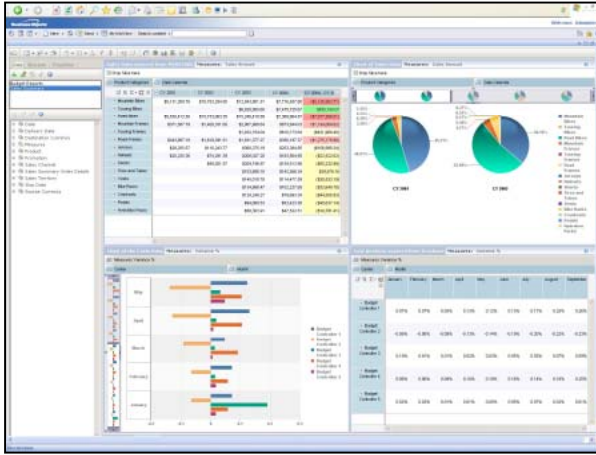
Time slider allows analysis of subset of data.

But fast access to data is only half the challenge. Analysts also need to use specific time and business calculations to understand potential business scenarios. Voyager does this by providing a range of its own calculations while also taking advantage of the most important functions currently available within industry-leading OLAP databases.

Once an analysis is complete, insight can be easily shared with business users across the organization and beyond with the Business Objects business intelligence (BI) platform. Voyager allows business users to interact with the data so they can explore and understand the analysis further. And they can export their results to Microsoft Excel, or save as Adobe PDFs for printing or archiving.

Comprehensive Data Access

One of the key requirements for any financial or business analyst is to access the range of OLAP data sources available within an organization. Voyager not only provides access to a wide range of OLAP databases, it also allows users to combine information from different systems in a single workspace. This greatly reduces the time it takes to pull the data together and complete the analysis. And it lessens the dependency on your support team for data consolidation.



Voyager allows simultaneous access to multiple OLAP cubes.

while also viewing the cube for inventory providing a more comprehensive view of the business. Supported OLAP databases include those from Microsoft, SAP, IBM, and Oracle (including Hyperion Essbase).

And it lessens the dependency on your support team for data consolidation.

Voyager is able to quickly deliver the specific data needed by refreshing only the relevant subset of data. This targeted “partial” refresh means users can get answers to questions swiftly and efficiently.

Voyager allows your users to show multiple views of the same OLAP cube, all within the same workspace. For example, analysts can access a view of the cube for customer sales

Cost Effective Deployments

Successful OLAP data analysis is dependent upon users having access to the appropriate data, regardless of geographical location. Voyager design is based on a completely modern AJAX-based web solution and takes advantage of the latest design techniques and technologies. The result is a functionally rich product in a zero client environment—allowing you to greatly reduce your deployment costs.

With Voyager, there is no need to develop, deploy, and support a completely separate system for analysts using OLAP data. Voyager is a web-based tool offered as part of the complete BusinessObjects XI Release 2 platform. So you can centrally manage security, data connectivity, and documents—driving down your costs.

It’s important to recognize users need to access OLAP in a variety of different ways. Increasingly, OLAP data cubes are used as data sources for many different business intelligence requirements, including production reporting and ad hoc query and analysis. Voyager is one part of a strategy that provides the right tools for the needs of each user. For OLAP information discovery and delivery, this strategy includes Crystal Reports® (for direct data access to OLAP cubes for production reporting) and Web Intelligence™ (for ad hoc analytic reporting with universes built upon OLAP data sources).

www.businessobjects.com