

BUSINESSOBJECTS DATA INTEGRATOR

IT Benefits

- Correlate and integrate data from any source
- Efficiently design a bulletproof data integration process
- Improve data quality
- Move data in real time and at any interval
- Accelerate large data volume movement
- Improve developer productivity
- Easily manage change and metadata from disparate systems

Business Benefits

- Receive trusted information
- Gain a single view of your organization
- Improve the accuracy of your information
- Perform trending and analysis
- Get timely information
- Lower total deployment costs

DELIVERING A TRUSTWORTHY DATA FOUNDATION FOR BI

Do you know where the numbers in your business intelligence (BI) report come from? Are you sure that your organization has access to reliable data? New compliance regulations require organizations to be accountable for the accuracy and timeliness of all externally reported information. Consequently, your BI end users need to know the source of the numbers in their BI report, how the numbers are calculated, and if the data is accurate and trustworthy.

Faced with today's compliance challenges and growing data volumes, IT departments must now correlate and integrate disparate enterprise data while ensuring end-user confidence in reporting, query and analysis, and performance management solutions.

BusinessObjects™ Data Integrator from Business Objects, an SAP company, is the most productive and scalable data integration platform for BI. It allows organizations to easily explore, extract, transform, and deliver data anywhere, at any frequency. Data Integrator helps ensure that your BI end users are always working with information that is timely, accurate, and trusted. With Data Integrator, you can:

- Deliver trusted information
- Maximize developer productivity
- Deliver extreme extract, transformation, and load (ETL) scalability

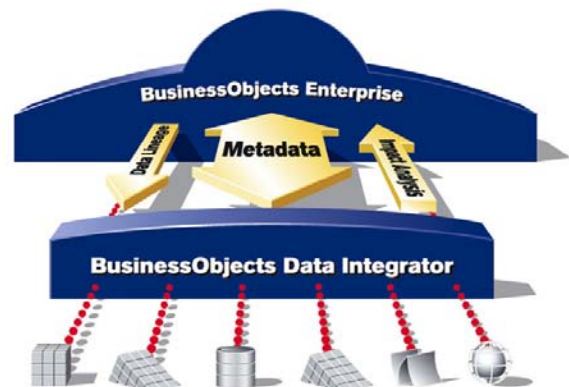


Figure 1: BusinessObjects Data Integrator Ensures Timely, Accurate, and Trusted Data

DELIVER TRUSTED INFORMATION

Compliance regulations require organizations to deliver timely, accurate, and auditable information. To meet these challenges, organizations need a single view of their enterprise metadata, improved data quality, visibility into the impact of source changes, and traceability of data back to the source systems.

BusinessObjects Metadata Manager

Do you have too many disparate metadata-generating systems? BusinessObjects Metadata Manager brings them all together to simplify your workload, lower your project's total cost of ownership, and provide your users with trusted data and analysis capabilities. Metadata Manager actively collects and unifies your BI, ETL, and third-party metadata. You can easily view and analyze your metadata through prebuilt metadata reports. These reports provide information on data quality, end-to-end impact analysis, and report-to-source data lineage. Consequently, you can deliver trusted data for compliance requirements, internal controls, and critical decisions. You can easily manage change and drive data consistency throughout the enterprise.

Data Quality Firewall

BusinessObjects Data Integrator provides capabilities to ensure the quality of your enterprise data. Advanced data profiling allows you to understand the content, structure, quality, and

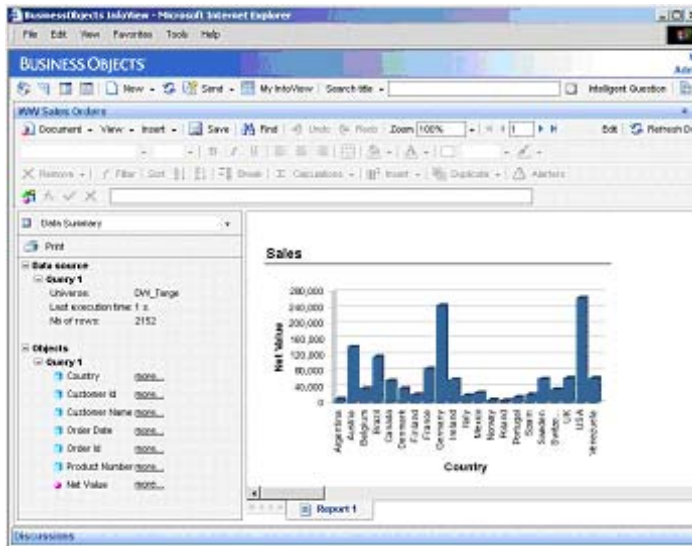


Figure 4: Data Lineage Lets BI Users Gain Trusted Information with the Ability to See Data Lineage Right Within Their BI Reports

MAXIMIZE IT PRODUCTIVITY

Data Integrator can significantly simplify and reduce your IT efforts by providing an intuitive environment to handle all tasks associated with building an ETL process – from gathering business requirements to managing change. Business Objects also offers prebuilt data integration solutions for source-specific enterprise applications to accelerate your BI deployment.

BusinessObjects Composer

BusinessObjects Composer is the only product in the market that helps you efficiently design bulletproof data integration processes. Through an intuitive Web-based user interface, you can easily manage the design phase of a BI deployment. Collaborate with a team to gather business requirements, profile your source data, build mappings, validate the accuracy of your design, generate data integration jobs, and document your project. With Composer, you can accelerate data integration design and improve data quality.

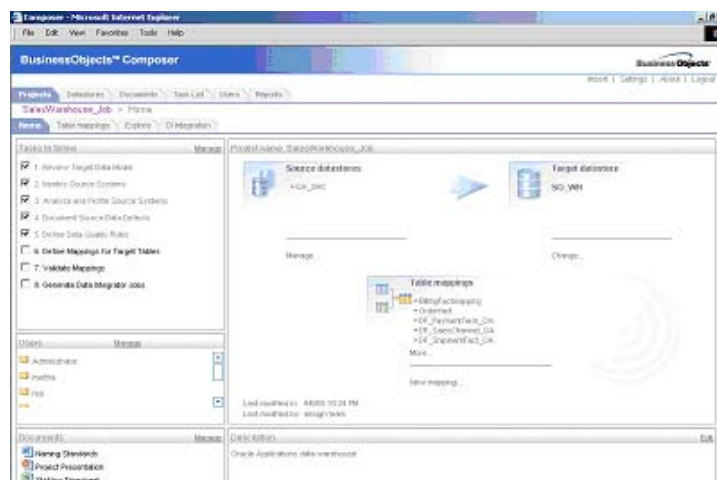


Figure 5: Using Composer, a Team of IT Professionals, Developers, and Business Analysts Can Collaborate to Design a High Quality Data Integration Process for Loading a Data Warehouse

Single Development Environment

With Data Integrator, you can accelerate and simplify development efforts by building and managing data integration jobs within a single graphical environment. The drag-and-drop user interface allows you to quickly build jobs that profile, validate, audit, cleanse, transform, and move data. Advanced debugging features let you analyze problematic data through the entire ETL process. The smart documentation capability saves you from having to manually document your work.

Powerful Prebuilt Transforms

With Data Integrator, you can perform a complete range of data transformations. Choose from a library of powerful, extensible, and reusable transforms for operations, such as hierarchy flattening for XML files, XML pipelining, pivot and reverse pivot of rows and columns, slowly changing dimensions, data cleansing and matching, change data capture, data validation, and more.

Multi-Developer Collaboration

Data Integrator offers complete functionality for team-based development and allows users to securely check work in and out of a central metadata repository. Your users can share and version their work to accelerate development. And you can easily compare differences between objects.

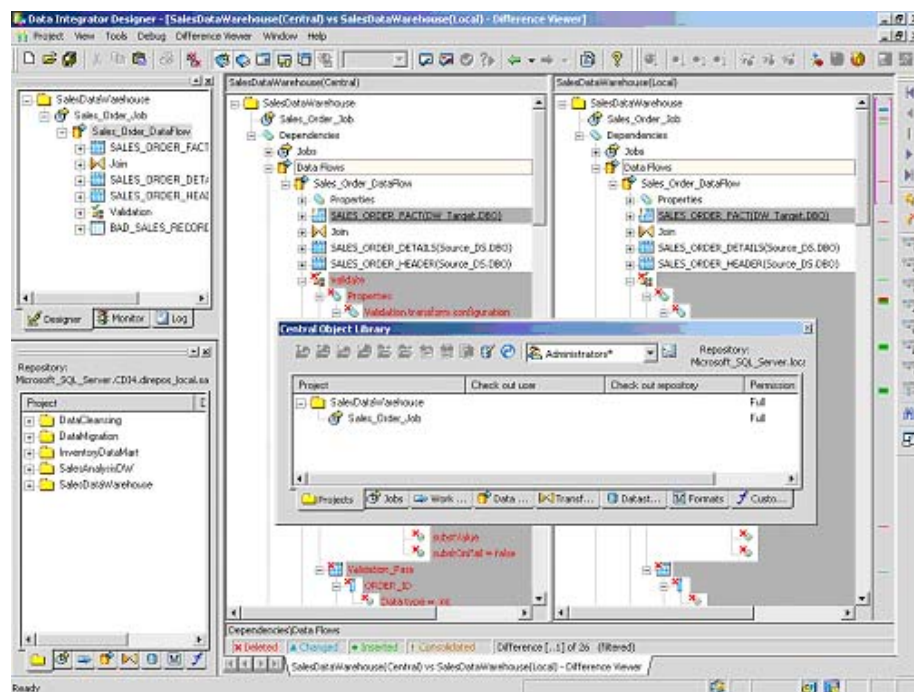


Figure 6: Multiple Developers Can Collaborate and Securely Check Objects In and Out of a Central Repository and View Differences Between Versions

Design Once, Deploy Many

Data Integrator jobs are portable to different database types, versions, and instances. So developers can design an ETL job once and port it to any database environment to accelerate deployment.

BI Metadata Integration

By deeply integrating the ETL process with the BI product used in your data warehousing project, both your IT and business users will gain measurable benefits such as easy metadata

BusinessObjects Data Integrator Features

Trusted Information:

- BusinessObjects Metadata Manager
- Data quality firewall
- Data profiling
- Data cleansing
- Data validation
- Data auditing
- End-to-end impact analysis
- End-to-end data lineage

IT Productivity

- BusinessObjects Composer
- Single development environment
- Secure, multi-user developer collaboration
- Complete end-to-end metadata analysis

Scalable Architecture

- Parallel processing
- Intelligent distributed processing
- Grid computing support
- Broad source and target support

management, simplified and unified administration, improved lifecycle management, and reduced maintenance costs. Using Data Integrator, you can automatically create and update a Business Objects semantic layer (that is, a Business Objects universe) to accelerate BI deployment and simplify change management.

Crystal Reports Integration

A wealth of historical knowledge is inside your regularly scheduled Crystal reports. Data Integrator unlocks the trending and analysis potential of this data by allowing you to build a data mart from Crystal Reports® data. Now you can see the impact of source changes all the way down to the Crystal report. And to ensure trust in your Crystal reports, you can answer questions about the origins of the numbers.

BusinessObjects Rapid Marts

BusinessObjects Rapid Marts™ are packaged, powerful, and flexible data integration solutions for delivering information from enterprise applications, such as SAP, Oracle, PeopleTools, J.D. Edwards, and Siebel. Built with BusinessObjects Data Integrator, Rapid Marts provide domain knowledge with data integration best practices to deliver an application-specific data mart, Business Objects semantic layer (Business Objects universe), and BI reports. Rapid Marts are available in these key domain areas: financials, human resources, order management, and purchasing. Using Rapid Marts, you can gain rapid insight, accelerate your BI deployment, and lower development costs.

DELIVER EXTREME ETL SCALABILITY

As volumes of data rise and accepted delays drop, you need to be able to rely on a high-performance, scalable data integration solution. Data Integrator delivers extreme ETL scalability with support for parallel processing, distributed processing, real-time data movement, and broad source and target support. This open and services-based architecture allows you to integrate with third-party products using industry standard protocols such as CWM, XML, HTTP/HTTPS, JMS, SNMP, and Web services.

Parallel Processing

The Data Integrator performance architecture meets the scalability requirements for today's ever-increasing data volumes and shrinking data load windows. Data Integrator provides intelligent threading, which enables parallelization in several ways. Within a single data transformation, it can dynamically launch multiple threads. In a single job, multiple transformations and job steps can run in a parallel structure. Multiple jobs can run simultaneously through multiple instances of the Data Integrator job engine. Through a grid computing implementation, multiple job servers can run concurrently to balance workload and maintain high system availability.

Distributed Processing

Data Integrator can maximize data integration performance by intelligently distributing workload to source systems such as databases and mainframes. For example, Data Integrator will leverage your database server to aggregate functions at the source level without moving the data to the Data Integrator server. With the ability to distribute processing to your source systems, Data Integrator minimizes unnecessary data movement across your network to optimize data integration performance.

Broad Source and Target Support

Data Integrator can help you connect to your data whether it resides in a relational database, mainframe system, or packaged application. In fact, no other product provides deeper metadata-based connectivity to packaged applications from SAP, Siebel, PeopleSoft, JDE, and Oracle. Native connectivity is available for virtually all database types or through ODBC. You can access legacy mainframe applications using integrated IBM technology. Data Integrator also supports flat files, XML, and Web services. If your application is proprietary, you can connect to it using a Java software development kit (SDK).

Services-Based Architecture

Data Integrator offers comprehensive support for Web services and allows any of your batch or real-time data integration jobs to be published as a Web service and called from another application. Data Integrator can also call Web service-enabled applications to easily access virtually any data.

THE BEST CHOICE ON THE MARKET TODAY

BusinessObjects Data Integrator helps organizations deliver timely, accurate, and trusted information. Through the ability to easily explore, transform, and deliver data, Business Objects provides your organization with the extreme insight you need to extend your competitive advantage. To learn more about Data Integrator or the BusinessObjects XI suite, visit our Website at www.businessobjects.com.

businessobjects.com



© 2008 Business Objects. All rights reserved. Business Objects owns the following U.S. patents, which may cover products that are offered and licensed by Business Objects: 5,555,403; 5,857,205; 6,289,352; 6,247,008; 6,490,593; 6,578,027; 6,831,668; 6,768,986; 6,772,409; 6,882,998; 7,139,766; 7,299,419; 7,194,465; 7,222,130; 7,181,440 and 7,181,435. Business Objects and the Business Objects logo, BusinessObjects, Business Objects Crystal Vision, Business Process On Demand, BusinessQuery, Crystal Analysis, Crystal Applications, Crystal Decisions, Crystal Enterprise, Crystal Insider, Crystal Reports, Desktop Intelligence, Inxight, the Inxight Logo, LinguistX, Star Tree, Table Lens, ThingFinder, Timewall, Let there be light, Metify, NSite, Rapid Marts, RapidMarts, the Spectrum Design, Web Intelligence, Workmail and Xcelsius are trademarks or registered trademarks in the United States and/or other countries of Business Objects and/or affiliated companies. All other names mentioned herein may be trademarks of their respective owners. Part # WS008-B